



ARE YOU READY TO  
**CAPTIVATE YOUR**  
**CUSTOMERS AND**  
**ELEVATE YOUR**  
**TEAM?**

 Lizuluaga



## SPECIALIZED IN CREATING EXPERIENCES THROUGH DESIGN AND DEVELOPMENT

Creative and visionary, passionate about designing unique corporate experiences. Focused on creating authentic and memorable moments, and your best ally to carry out projects that leave a significant mark on your company's brand.

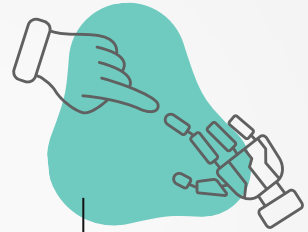
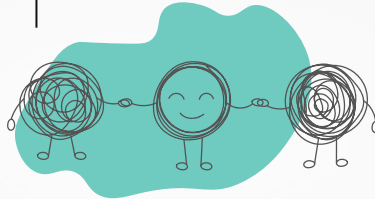


# AREAS OF EXPERTISE.



Creating memorable experiences

Managing emotions to strengthen relationships



Innovation and human approach

# OUTSTANDING COLLABORATIONS



[Click here for more information.](#)



# SERVICES





## **DID YOU KNOW?**

Companies that offer an emotionally connected experience with their customers can increase their revenue by 10 to 15%, as satisfied and emotionally engaged customers are more inclined to make repeat purchases and advocate for the brand.

Data collected by the Experience Marketing Association (DEC Association).





# FOR CUSTOMERS

You will discover the services that will allow you to highlight the unique experience your customers will have when connecting with your brand.



## **IMMERSIVE BRAND EXPERIENCE**

Crafting immersive experiences that blend technology, interaction, and emotion, enabling customers to engage with your brand in truly unique ways. From augmented reality experiences to multisensory events, we bring your brand to life in unforgettable ways.



## **CREATION OF VIP BRAND EXPERIENCES**

Designing exclusive experiences tailored for high-value customers, including private events, personalized gifts, and moments that surpass their expectations, making them feel truly unique and valued by your brand.



## DESIGN OF THE SALES EXPERIENCE

Specialized in designing and redesigning customer journey experiences that enhance your sales process, attract and retain clients, and differentiate your brand. From initial contact through to post-sale, we ensure that every touchpoint is strategically aligned to foster trust and build lasting loyalty.



## CUSTOMER EMPATHY WORKSHOP

Creating workshops to develop empathy and emotional management within customer service teams. The required approach has been studied, with careful attention given to the company's products or services, fostering more empathetic and human interactions.







## **DID YOU KNOW?**

According to studies, companies that invest in employee well-being report an increase of up to 12% in productivity and a decrease of up to 30% in absenteeism rates.

Information taken from multiple studies, such as those conducted by the Global Wellness Institute and other relevant organizations.





# FOR YOUR TEAM

It's the perfect time to strengthen your relationship with your team. Below, I present two options that will enhance employee loyalty and their connection to the company.



## WELLNESS EXPERIENCE DESIGN

Programs and events have been designed to enhance the emotional well-being and engagement of talented employees through creative activities and workshops. This has been achieved through annual calendars or targeted activities aimed at addressing psychosocial risk factors.



## CREATION OF RECOGNITION RITUALS

The identification and design of celebrations or special moments marking key company milestones (*birthdays, anniversaries, year-end parties*) are carried out in an emotionally meaningful way. These events aim to strengthen employee loyalty and commitment while reinforcing organizational objectives






**CONTACT  
ME FIRST,  
THINK  
LATER.**

Click here and visit  
my website.



 **Lizuluaga**

 [lizuluagav@gmail.com](mailto:lizuluagav@gmail.com) |  +57 (312) 653 2237 |  [lizuluagavaragas](https://www.instagram.com/lizuluagavaragas)



# RAÍCES CREATIVAS

The "Raíces Creativas" event, organized for the Fundación Posada de Moisés, aims to raise funds to cover the school expenses of beneficiary children at the start of the 2026 academic year.

I BELIEVE IN THE POWER OF ART TO TRANSFORM LIVES

A percentage of the profits from every service you book with me will be dedicated to the planning, logistics, and promotion of the "Raíces Creativas" event, helping this initiative continue to grow. This means that **you, as a client, will also be a part of this beautiful project.**

For more information about this event, click here

